	Title:	WI-08-04	Owner:	Operations
	Description:	Packaging	Users:	Operations Personnel
	Rev:	A		
	Date:	3/1/2018		

Domestic Packaging

All Domestic Skids are constructed using Pine or Compliant Plywood/ OSB

****FLATBED Shipments:** Packaging is Minimized

- Standard Packaging does Not Apply
- Gauge Material MUST be Skidded- 5000 lb Max
- Loads are Required to be Covered

BLOCKED PLATE

Constructed

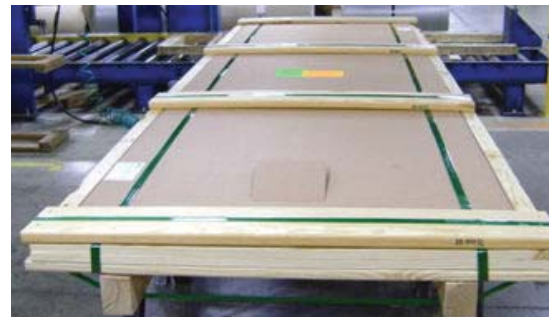
- 2- 3"x 4" or 2"x 4" Stand Boards for Easier Handling
- 2- Metal/ Polyester Bands, (spacers between bands and material)
- * NO Gauge material can be bundled



CINCINNATI STANDARD SKID 1 (AEROSPACE, .125" AND THINNER)


Constructed

- 2000 LBS Maximum per Skid
- 2- 3"x 4" Runners
- 9- 1"x 6" Bottom Slats Minimum (at the minimum, 50% of material will be supported by slats)
- 4- 1"x 6" Braces Between First Two Slats on Both Ends
- 1"x 2", 2"x 2", 2"x 4" or 2"x 6" Framing around Material
- 2- Cardboard Covers, Above and Beneath Material
- 3- 1"x 6" Top Slats Minimum, for Extra Protection
- 1- Additional Top Cardboard Cover with Slot for Shipping Documents
- 2- Metal/ Polyester Bands across Length
- 3- Metal/ Polyester Bands across Width, Minimum



Sizes

- All Sizes
- 030" and Thinner or Shipments West of Mississippi. Plywood/ OSB Will Be Added, an

	Title:	WI-08-04	Owner:	Operations
	Description:	Packaging	Users:	Operations Personnel
	Rev:	A		
	Date:	3/1/2018		

STANDARD SKID 2 (INDUSTRIAL)

Constructed

- 3500 LBS Maximum per Skid
- 2- 3"x 4" Runners, or Equivalent
- 1- 2"x 4" Partial Center Runner
- 2- 3"x 4" Center Blocks, or Equivalent
- 5- 1"x 6" Slats Minimum
- 2- Cardboard Covers, Above and Beneath Material for Sheet Product, Plate Does NOT Require Cardboard
- 3- Metal/ Polyester Bands across Width, Minimum



Sizes

- All Sizes
- 16 GA and Thinner, Additional Slats will be Added



STANDARD COIL

Constructed

- 3- 4"x 4" Runners, Minimum
- 2- 8"x 4" Slates or Cradle with One Corner Notched
- Cardboard Wrapped Outside Diameter
- 4- Metal/ Polyester Bands, Minimum

Sizes

- All Coil




U-TUBE

Uses- Bar, Flat Metal Strips, Smaller Shapes, Pipe

Constructed

- Custom Cut Reinforced Cardboard Shell
- Wood Tube Ends
- 3- Metal/ Polyester Bands around Box, Minimum
- 2- 3"x 4" Stand Boards for Easier Handling



	Title: WI-08-04	Owner: Operations
	Description: Packaging	Users: Operations Personnel
	Rev: A	
	Date: 3/1/2018	

STANDARD SINGLE BAR

Constructed

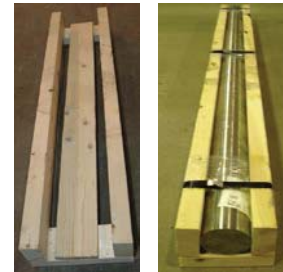
- 1- 2"x 4", 2"x 6" or 2"x 10" Board Running Full Length of Material
- 2- 2"x 4" Stand Boards for Easier Handling
- 3- Metal Bands, Minimum (spacers between bands and material)
- Some Orders will be Sandwiched Between 2 Boards



STANDARD BAR CRADLE

Constructed

- 2- 2"x 4", 2"x 6" or 2"x 10" Cradle Boards Running Full Length of Material
- 1- 1"x 3" Board, (underneath protection)
- 2- 2"x 4" Stand Boards for Easier Handling
- 3- Metal Bands, Minimum (spacers between bands and material)




CRATE

Constructed

- 2 Plywood/ OSB Sheets (Bottom)
- 2- 2"x 8" Side Walls and End Caps, or Plywood/ OSB
- 1 Plywood/ OSB Sheet (Top)
- 3- Metal/ Polyester Bands around Box, Minimum

Sizes



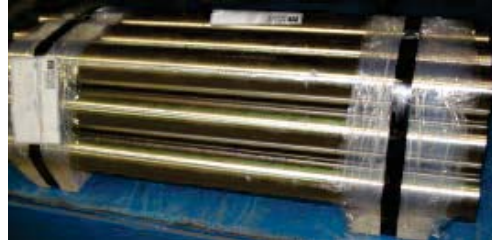
	Title: WI-08-04	Owner: Operations
	Description: Packaging	Users: Operations Personnel
	Rev: A	
	Date: 3/1/2018	

STANDARD BUNDLES

Uses- Bar or Plate

Constructed

- 2- 3"x 4" or 2"x 4" Stand Boards for Easier Handling
 - 5- Metal/ Polyester Bands, Minimum on Full Length Random Bars(spacers between bands and material)
 - 2- Metal/ Polyester Bands, Minimum on other Length Bar and Plate(spacers between bands and material)
- * NO Gauge material can be bundled
 * All Schedule 10 Pipe Must be Packaged in Closed Container



PLASTIC BUCKETS

Uses- Small Pieces, Nuts, Bolts, Washers

Constructed-

- Plastic Bucket
- Plastic Locking Lid
- Plastic Handling Strap

Sizes

- 7"x 5"x 8"- 1 Gallon
- 9"x 9"x 7"- 2.1 Gallon



- **UPS/ FedEx ALLOWED-** Buckets Placed inside Cardboard Box to Avoid Unconventional Packaging Charges

CARDBOARD TUBES


Uses- Small Diameter Bar and Some Flat Product

Constructed-

- 2.25", 2.75", or 4" Inside Diameter Cardboard Tube
- Metal/ Wood End Covers/ Caps
- Ends Wrapped with Packing Tape or Stapled

Sizes



	Title:	WI-08-04	Owner:	Operations
	Description:	Packaging	Users:	Operations Personnel
	Rev:	A		
	Date:	3/1/2018		

CARDBOARD ENVELOPE

Uses- Flat Sheet Products

Constructed-

- Cardboard Shell
- Plywood/ OSB Frame
- Top Sealed with Packing Tape
- Paper Cushion and Spacers can be Added per Customer Request, Size Conditions
- 70 lbs Maximum Weight

Sizes

- 24x24, 24x36, 36x36, 36x48, and 48x48

- **UPS/ FedEx ALLOWED**



CARDBOARD BOX

Uses- Pieces Unable to be Packaged in Buckets

Constructed-

- Cardboard Shell
- Bottom Sealed with String Supported Packing Tape
- Top Sealed with Packing Tape
- Peanuts and Spacers can be Added per Customer Request
- 70 lbs Maximum Weight

Sizes:

- 7" x 7" x 7"
- 9" x 9" x 9"
- 10" x 10" x 8"
- 10" x 6" x 4"
- 17" x 6" x 3"
- 18" x 6" x 6"
- 25" x 4" x 4"
- 16" x 16" x 6"
- 13" x 13" x 5.5"
- 18" x 10" x 8"
- 20" x 20" x 4"
- 13" x 13" x 9"
- 24" x 14" x 14"
- 42" x 6" x 6"



